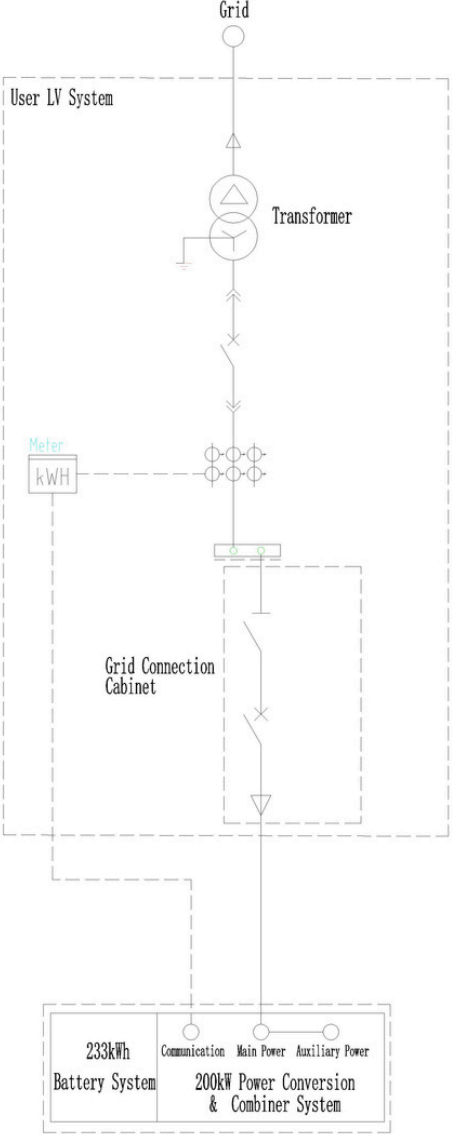


Scope of Supplies

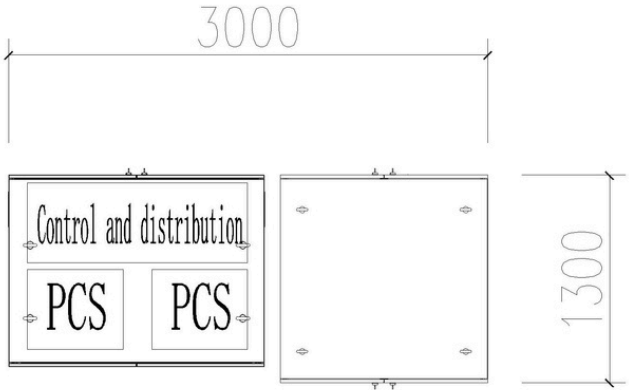
Fire safety:	Yes
Burglary resistance:	Yes
Grid Connection Wiring:	Yes
Groundwork / Concrete:	Yes
Battery (CATL EnerOne):	1 units of 233 kWh
Energy Management System (EMS):	Yes
Power Conversion System (PCS - DELTA):	2 units of 100kW
AUX power:	Yes
Transformer Substation:	Yes
Switchgear:	Yes
Complete Installation:	Yes

Item		Specification	Qty	Unit	Manufacture	Certification	Remarks
DCside	Battery System	233kWh	1	pcs	CATL	IEC 62619、 IEC 61000、 IEC60730、 UL9540A、 UL1973	CATL: Enerone 1P260S 280Ah LFP for single system, BMS, Liquid Cooled TMS, Fire Fighting System Included
ACside	PCS	100kW	2	pcs	Delta	IEC 62477, IEC 61000-6-2, IEC 61000-6-4 EN50549-1, VDE-AR-N 4105, G99	Delta: PCS100HV 400V 3 Phase, 50HzConfigurable 100kW THDi < 3%
Control	Control Cabinet	IP Rating: IP55 Corrosion: C4M	1	pcs	Green Hero		Local Controller, MBMU, Ethernet Switch Fire Fighting System Panel Auxiliary Breaker Panel DC Breaker Panel
Accessories			1	kits			Powering Cable Communication Cable Within the System

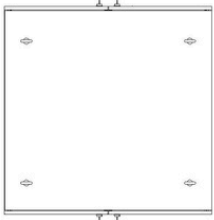
System Anatomy



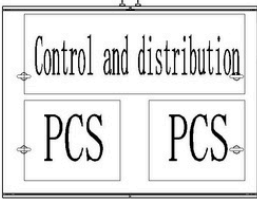
200kW/233kWh



battery cabinet:



Power Conversion & Combiner cabinet :

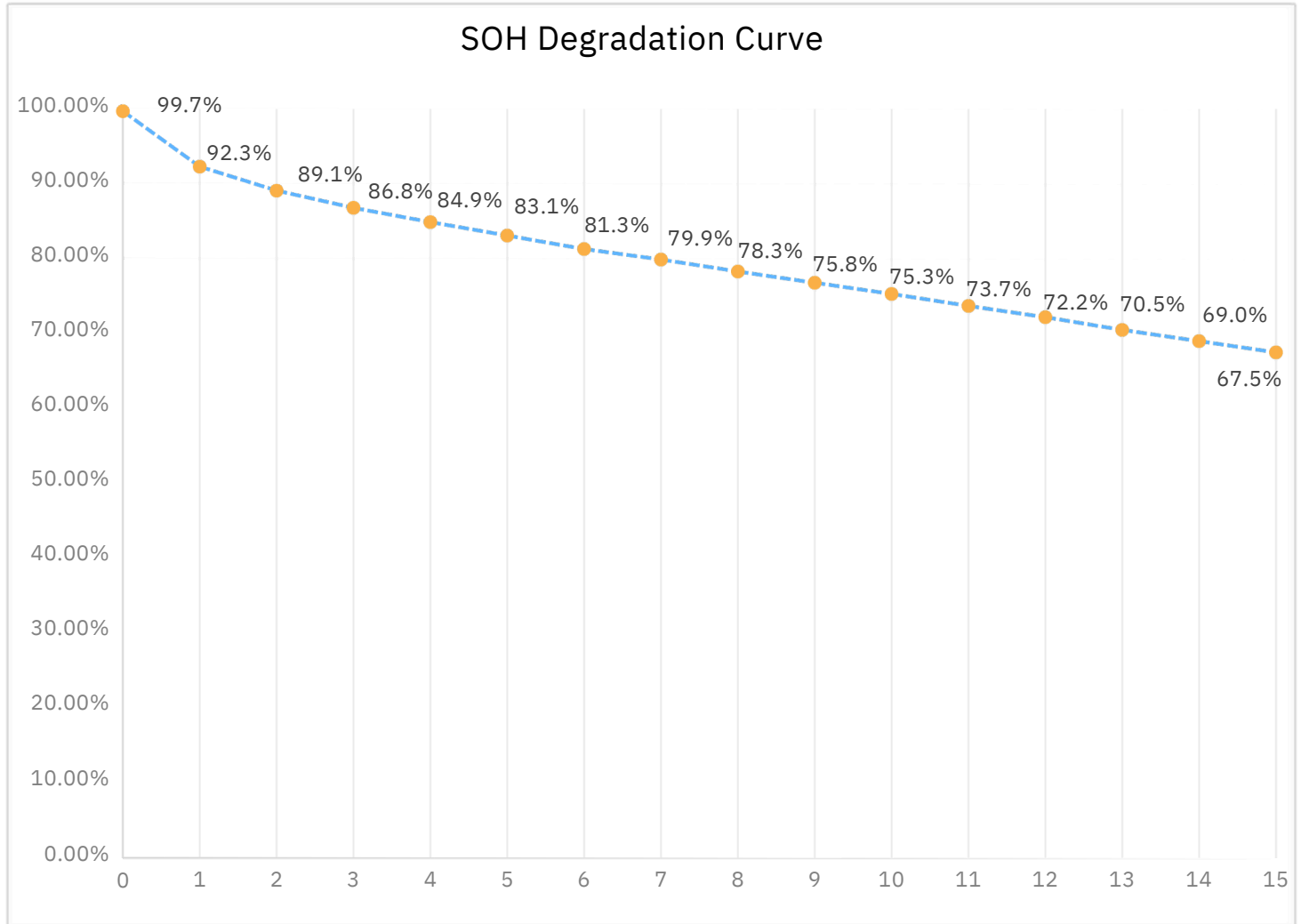


Degradation Curve



Operating Condition	
Ambient Temperature	25° C
Charging Rate	1C
Discharging Rate	1C
Charging/Discharging Interval	6h
Cycle Per Year	365

Year	
0	99.7%
1	92.3%
2	89.1%
3	86.8%
4	84.9%
5	83.1%
6	81.3%
7	79.9%
8	78.3%
9	76.8%
10	75.3%
11	73.7%
12	72.2%
13	70.5%
14	69.0%
15	67.5%



System Specification

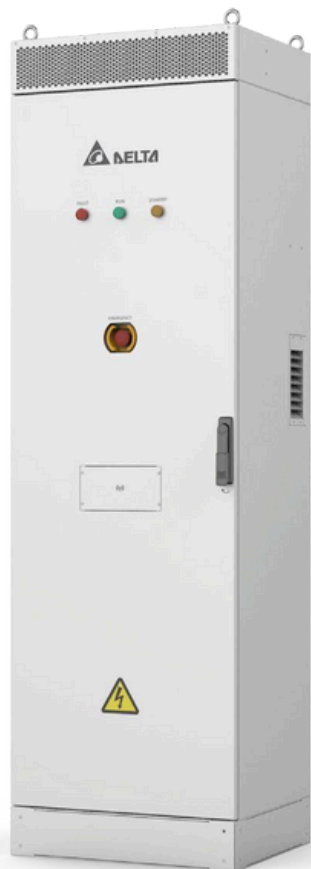
Battery System



Battery System	
Rated Energy	232,96kWh
Nominal Voltage	832 VDC
Voltage Range	728~936Vdc
Configuration	1P260S
Cell Type	LFP
Cell Capacity	280Ah
Cell Voltage Range	2.8~3.6V
C-Rate	1C
Rated Charging Current	280A
Rated Discharging Current	280A
Cooling Method	8kW Liquid Cooling
Storage Temperature	-40°C to 60°C
Altitude	≤2000m
Weight	2840kg
Dimension (WxDxH)	1300mm * 1300mm *2280mm
IP Rating	IP55
Corrosion-Proof Rating	C5
Operation Temperature	-30°C to 50°C
Relative Humidity	0 to 95% RH non-condensing
DOD	100%
Cycle life	8000 Cycles
Compliance	IEC62619, IEC62477-1 IEC610000-6-2/4, UL1973, UL9540A

System Specification

PCS



Power Conversion System	
DC Connection	
Full Power DC Voltage Range	650 to 1350V
Rated Output Current	145 A
AC Connection	
AC Output Power	100 kVA / kW
Rated AC Current	145 A
Max. Continuous AC Current	167 A
Nominal AC Voltage	400 Vac (3P,N,PE) or (3P,PE)
Grid Voltage Range	352 ~ 440 Vac
Nominal AC Frequency	50 Hz
Frequency Range	45~55 Hz
THDi	<3%
Power Factor	-1 to 1, continuously adjustable
General	
Dimension (WxHxD)	600 × 2000 × 500 mm
Approximate Weight	230kg
Operating Temperature	-30 °C to +60 °C, de-rating >45°C
Relative Humidity	0 to 95% RH, Non-Condensing
Altitude	4,000 m, de-rating >2000m
Enclosure Rating	IP55
Compliance	
Safety/EMC	IEC 62477,IEC61000-6-2,IEC 61000-6-
Grid Connection	4 EN50549-1,VDE-AR-N4105.,G99